

www.nipponlevator.com



ESCALATOR & PASSENGER CONVEYOR



Nippon Malaysia Manufacturing Plant:

NIPPON Lift Industry Sdn Bhd
1030 Lengkok Perindustrian Bukit Minyak 2,
Kawasan Perindustrian Bukit Minyak
14100, Penang, Malaysia.
+60(4) 508 8833
+60(4) 508 8866
Email: info@nipponlevator.com
Website: <http://www.nipponlevator.com>

NIPPON Elevator Sdn Bhd (Malaysia Local Projects)

No. 42, 1st Floor, Bayan Lepas,
Persiaran Mahsuri 1/2, 11900 Sunway Tunas,
Bayan Lepas, Penang, Malaysia.
+604-641 1833
+604-642 1832

NIPPON China Manufacturing Plant:

28 Weixin Road, Ecological Hub,
215122 Suzhou, P.R. China.

We reserve the right to alter some of specifications and descriptions given here in without prior notices

NIPPON LIFT INDUSTRY SDN. BHD.

Manufacturing Facilities



Believed that best quality comes from the best equipment, NIPPON has imported the world's first classic NC facilities. At present, NIPPON has been updated its 6 sheet metal lines, there are 4KW laser cutting machine from MITSUBISHI, Turret punching machine from WIEDMANN, CNC Bending and shearing machine from KOMATSU, Processing lines from AMADA, Processing Center from CINCINNATI, Welding robot from YASKAWA and etc.

All these can well guarantee our manufacturing quality.



Workshop



Turret punching and shearing machine



Robot station



SALVAGINI flexible product line



Welding robot



Laser cutting machine

FES Escalator



Silence and comfort. The new generation has inherited the traditional safety, reliability, high efficiency style and combined with updated market trends as well as tailored solutions. It is widely used for shopping malls, Hotels, office blocks and etc.



Avalon mall, Israel

Type	FES
Inclination	30° /35°
Step width(mm)	600/800/1000
Horizontal step run (mm)	800/1200
Speed (m/s)	0.5
Power supply	AC 3 phase 5 wire 50Hz/60Hz
Installation position	Indoor/Outdoor
Rise(m)	2-7.5

Type	Standard	Optional
Balustrade design	Vertical safety glass (10mm safety tempered glass)	
Balustrade profile	Hairline ST/ST	
Handrail	Black	Other colors
Deckings	Hairline ST/ST	
Skirting panel	Hairline ST/ST	
Step	ST/ST /Aluminum alloy, painted with silver gray, or Black color	
Landing plate	Etched ST/ST with anti slip pattern / Aluminum	
Operation panel	Red emergency stop button and up/down key switch	Traffic light



Bevo Shopping Center, Curitiba



Brasilia Royal Hospital, Australia



Beijing Technology Hall, Beijing, China



Dockers Hall, Sweden

FEH Escalator



Weatherproof and unique balustrade design, conform to special customer specifications. It is suit for airport, subway and overpass etc.



Type	FEH
Inclination	30° / 35°
Step width(mm)	600/800/1000
Horizontal step run (mm)	800/1200/1600
Speed (m/s)	0.5/0.65
Power supply	AC 3 phase. 5 wire 50Hz/60Hz.
Installation position	Indoor/Outdoor
Rise(m)	2-12.5

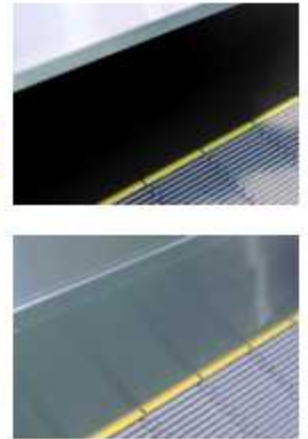
Type	Standard	Optional
Balustrade design	Vertical safety glass(10mm safety tempered glass)	Vertical/Inclined ST/ST
Balustrade profile	Hairline ST/ST	
Handrail	Black	Other colors
Deckings	Hairline ST/ST	
Skirting panel	Hairline ST/ST	
Step	ST/ST / Die- cast aluminum, painted with silver gray. Black color/Yellow resin demarcation	
Landing plate	Etched ST/ST with anti slip pattern /Aluminum with anti-slip grooves	
Operation panel	Red emergency stop button and up-down key switch	Traffic light



Passenger Conveyor



Is reliable, high efficiency, easy for maintenance, which is suit for hypermarket and airport.



Specs	Passenger conveyor		
Type	FET	FEF	FEW
Inclination	10° 11° 12°	10° 11° 12°	0° - 8°
Pallet width (mm)	800/1000	800/1000	1000/1200/1400
Horizontal pallet run (mm)	400(upper landing)	400/800	N/A
Speed (m/s)	0.5		
Power supply	AC 3 phase. 5 wire 50Hz/60Hz		
Installation position	Indoor/Outdoor		
Rise/Length(m)	H:2-8	H:2-8	L:120

Type	Standard	Optional
Balustrade design	Vertical safety glass(10mm safety tempered glass)	Inclined ST/ST for FEW
Balustrade profile	Hairline ST/ST	
Handrail	Black	Other colors
Deckings	Hairline ST/ST	Hairline ST/ST
Skirting panel	Hairline ST/ST	Teflon coating
Pallet	Die- cast aluminum, painted with silver gray.	Black color
Landing plate	Etched stainless steel with anti slip pattern	Aluminum with anti-slip grooves
Operation panel	Red emergency stop button and up-down key switch	Traffic light



Standard Features



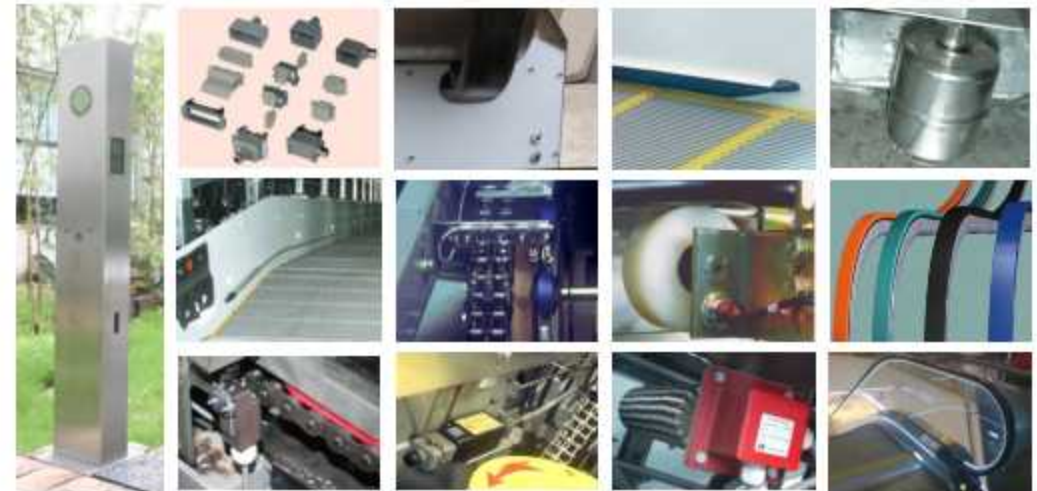
Standard	FES	FEH	FET/FEF/FEW
Skirting Contacts	●	●	
Handrail Entry Contacts	●	●	●
Step/Pallet chains contacts	●	●	●
Step/Pallet sag contacts	●	●	●
Phase Monitor	●	●	●
Motor Overload	●	●	●
Motor Overheat	●	●	●
Comb Contacts	●	●	●
Step Gap Illumination	●	●	
Maintenance Interlock Protection	●	●	●
Alarm buzzer	●	●	●
Speed Monitor with Electrical Reverse Detection	●	●	●
Step/Pallet anti-static brush	●	●	●
Emergency stop buttons	●	●	●
Step/Pallet reversing fences	●	●	●
Handrail anti-static roller	●	●	●
Service brake release contact	●	●	●
Safety Brake on Main shaft		●	
Soft Stop	●	●	●



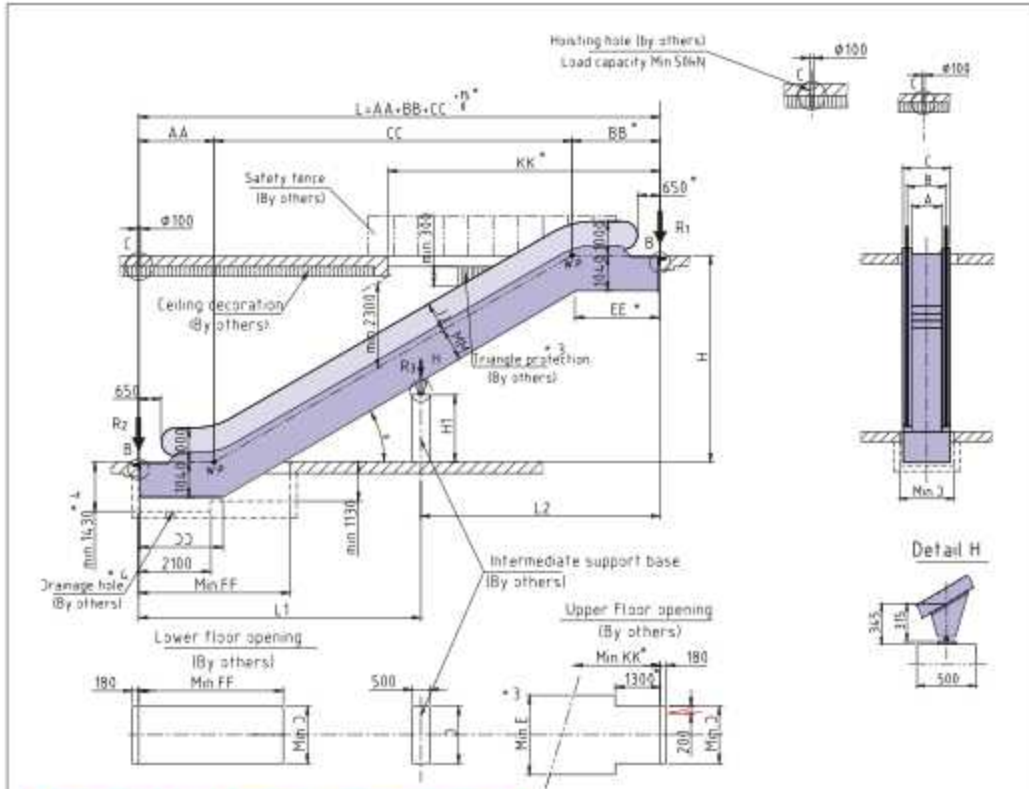
Optional Features



Optional	FES	FEH	FET/FEF/FEW
Handrail Colour	●	●	●
Step/Pallet Colour	●	●	
Surge Protection	●	●	●
Step Safety Demarcation	●	●	
Fire Interface	●	●	●
Dry Contact for Remote Monitoring System	●	●	●
Automatic Lubrication System	●	●	●
Comb Heating System	●	●	●
Truss Heating System	●	●	●
Fault Diagnostic System	●	●	●
Step/Pallet Missing Monitor	●	●	●
Brake Distance Monitor	●	●	●
Handrail Speed Monitor	●	●	●
Skirting Brush	●	●	●
VVVF Control	●	●	●
Auto-Start	●	●	●
Outside Cladding	●	●	●
Safety Brake on Main Shaft	●		●
Traffic Light	●	●	●
Comb Light	●	●	●
Skirting Lighting (LED Dot Light)	●	●	●
Landing Plate Contact	●	●	●
Handrail Broken Contact	●	●	●
Step Upthrust Contact	●	●	●
Float Contact	●	●	●
Drive-chain Contact	●	●	●
Cable Connector for intersection	●	●	●



FES Layout for Commercial Escalator

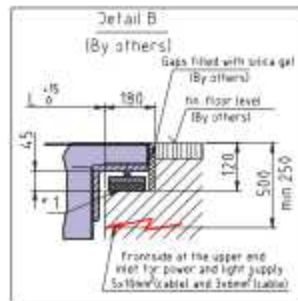


Type	α	AA	BB	CC	FF	JJ	KK
FES-302	30°	2195	2564	H×1,732	4200	870	7900
FES-352	35°	2229	2648	H×1,428	4000	850	7100
FES-303	30°	2595	2964	H×1,732	4600	870	8300
FES-353	35°	2629	3048	H×1,428	4400	850	7500

For slim-vertical balustrade

A	600	800	1000
B	837	1037	1237
C	1145	1345	1545
D	1200	1400	1600
E	1850	2050	2250

Type	α	DD	EE	MM
FES-302	30°	2230	2205	2470
FES-352	35°	2385	2352	2450
FES-303	30°	2630	2605	2870
FES-353	35°	2785	2752	2850



A	Reaction Force (KN)	
	With intermediate support	With one intermediate support
600	R1=3.35×L+15.5	R1=3.35×L+11.5
	R2=3.35×L+10	R2=3.35×L+4.5
800	R1=3.7×L+17	R1=3.7×L+12
	R2=3.7×L+11	R2=3.7×L+4
1000	R1=4.15×L+18.5	R1=4.15×L+12.5
	R2=4.15×L+11.5	R2=4.15×L+4.9

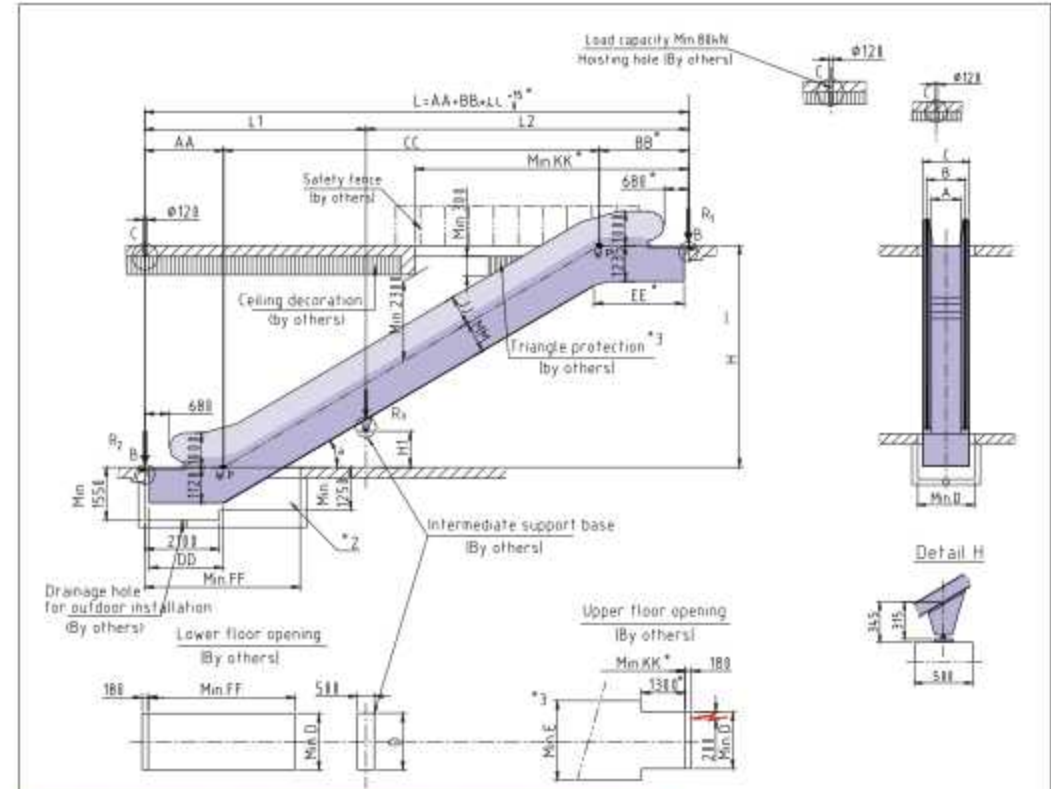
Note: 1.L, L1, L2 is in meter

Notes:

- Definitions:
 - Mark "1": Supports need to be in true level
 - Mark "2": If there is pit, pit need to be water proof and smooth
 - Mark "3": If dimension E can't be guaranteed, a guard acc EN115 must be provided as shown (by others)
 - Mark "4": only for outdoor installation
- According to EN115, the entrance of both landing must have enough area to facilitate the traffic flow
- Dimension with mark "3" should be extended 500mm in case 600mm step or double drive or in case VVVF
- Intermediate support is reinforced in case of horizontal over 15m please contact us
- All dimension refer to finished dimension is in mm

We reserve the right to alter some of specifications and descriptions given herein without prior notice

FEH Layout for Public Service Escalator



Type	α	Uppercase	AA	BB	CC	DD	EE	FF	JJ	MM	KK
FEH302	30°	1500	2231	2598	H×1,732	2370	2615	4530	870	1060	8000
FEH303	30°	1500	2631	2998	H×1,732	2770	3215	4930	870	1060	8400
FEH304	30°	1500	3031	3398	H×1,732	3170	3615	5330	870	1060	8800
FEH352	35°	1500	2286	2682	H×1,428	2505	2790	4420	850	1080	7200
FEH353	35°	1500	2686	3082	H×1,428	2905	3180	4820	850	1080	7600
FEH303	30°	2700	2963	3283	H×1,732	3000	3500	5160	870	1060	8800
FEH304	30°	2700	3263	3683	H×1,732	3400	3900	5560	870	1060	9200

For inclined balustrade For slim-vertical balustrade

A	600	800	1000
B	837	1037	1237
C	1195	1395	1595
D	1270	1470	1670
E	1910	2110	2310

A	Reaction Force (KN)	
	With intermediate support	With one intermediate support
600	R1=4.05×L+16.3	R1=4.05×L+14
	R2=4.05×L+8.5	R2=4.05×L+7
800	R1=4.45×L+17	R1=4.45×L+16
	R2=4.45×L+9.5	R2=4.45×L+7.5
1000	R1=4.95×L+19.5	R1=4.95×L+17.2
	R2=4.95×L+10.5	R2=4.95×L+8.3

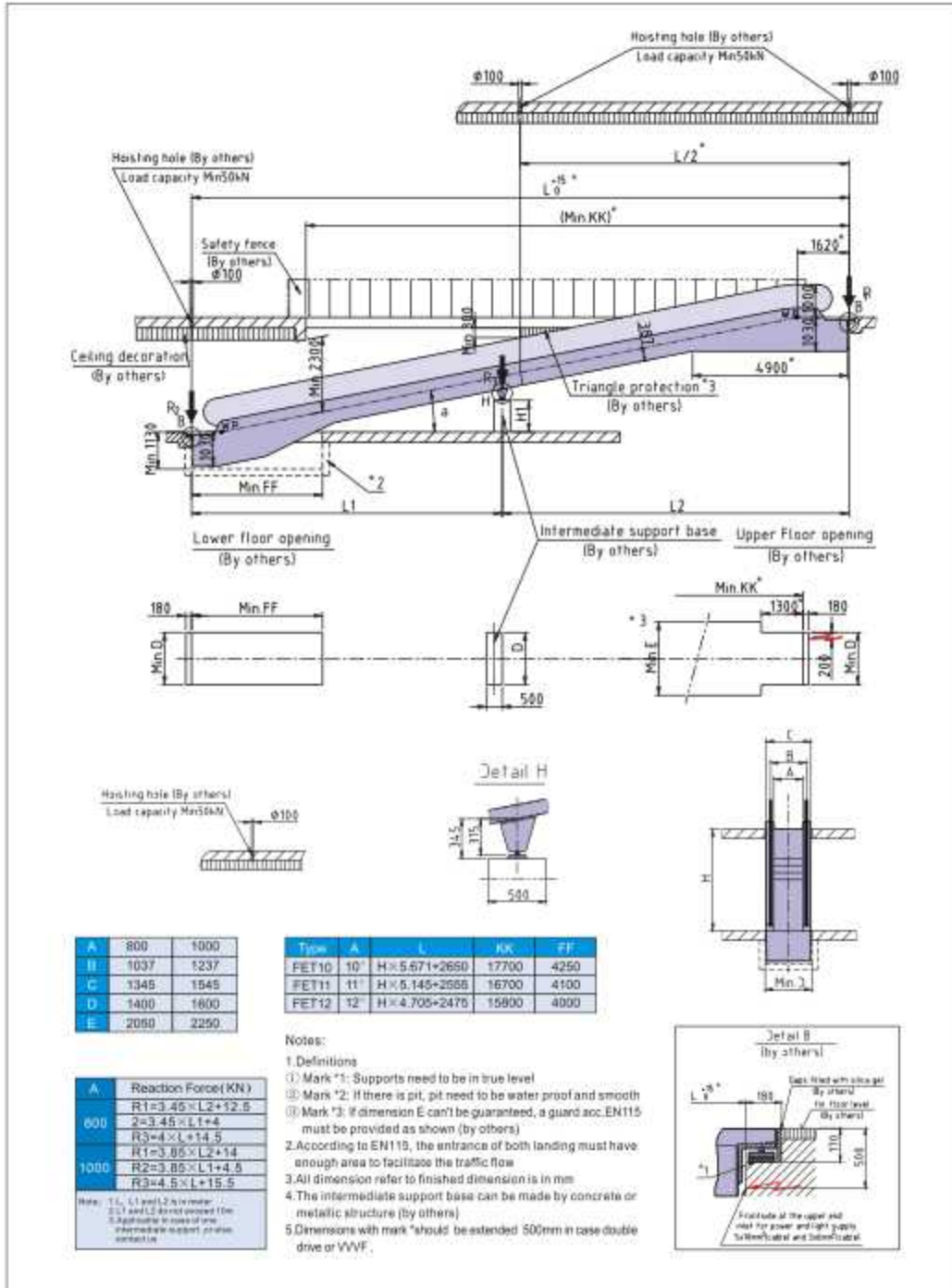
Note: 1.L, L1 and L2 is in meter
2.L1 and L2 do not exceed 15m

Notes:

- Definitions:
 - Mark "1": Supports need to be in true level
 - Mark "2": If there is pit, pit need to be water proof and smooth
 - Mark "3": If dimension E can't be guaranteed, a guard acc EN115 must be provided as shown (by others)
- According to EN115, the entrance of both landing must have enough area to facilitate the traffic flow
- Dimension with mark "3" should be extended 470 mm in case 600mm step or double drive or in case VVVF
- All dimension refer to finished dimension is in mm
- The intermediate support base can be made by concrete or metallic structure (by others)

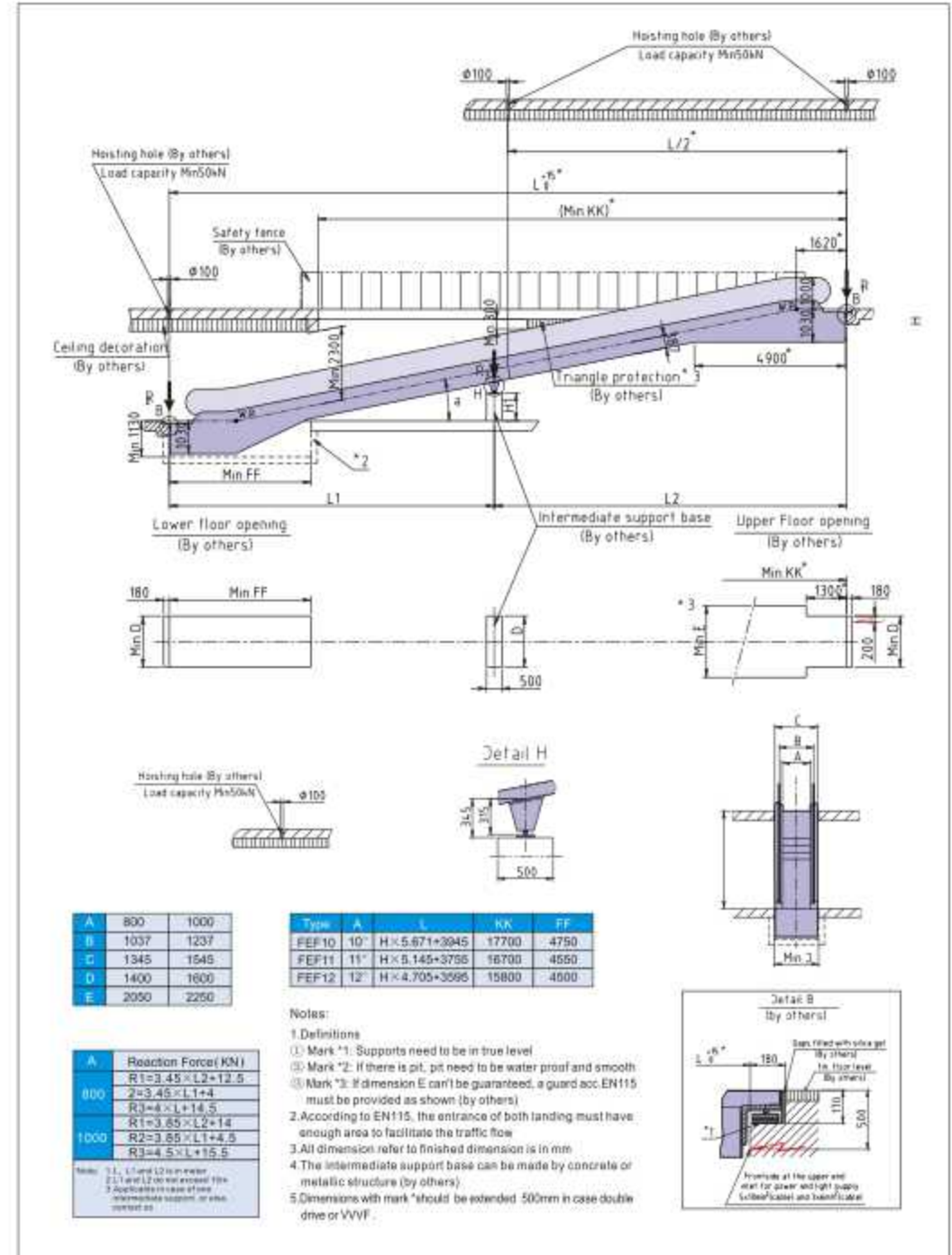
We reserve the right to alter some of specifications and descriptions given herein without prior notice

FET Layout for Passenger Conveyor



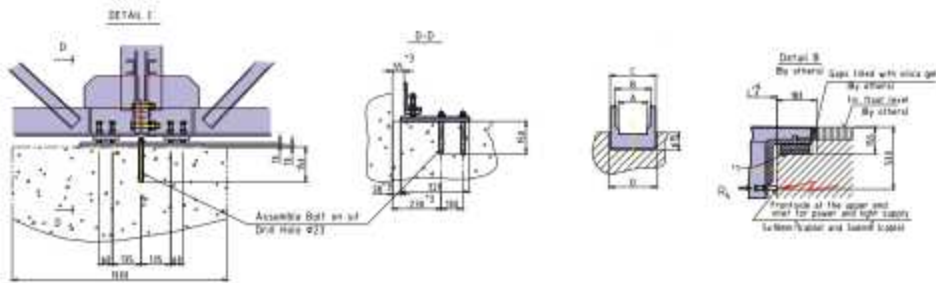
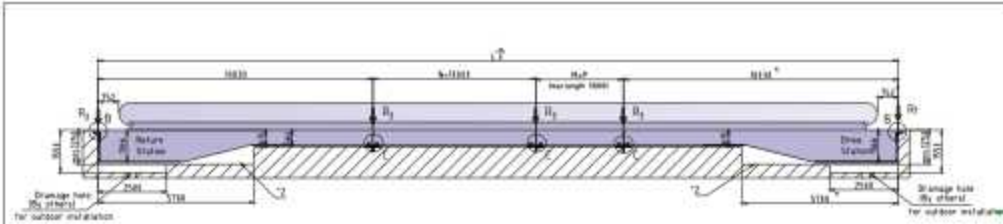
We reserve the right to alter some of specifications and descriptions given herein without prior notice

FEF Layout for Passenger Conveyor



We reserve the right to alter some of specifications and descriptions given herein without prior notice

FEW layout for Passenger Conveyor



Inclined balustrade

A	1000	1200	1400
B	1310	1510	1710
C	1595	1795	1995
D	1670	1870	2070

Vertical balustrade

A	1000	1200	1400
B	1237	1437	1637
C	1595	1795	1995
D	1670	1870	2070

A	1000	1200	1400
Reaction Force (KN)			
R1	65	64	73
R2	53	61	69
R3	90	110	125
R4	5	5	5

Note:

1. Mark:

- ① Mark*1: Supports need to be in true level
- ② Mark*2: If there is pit, pit need to be water proof and smooth
- ③ Mark*3: If dimension D is changed, the dimension marked should be adjusted

- 2. According to EN115, the entrance of both landing must have enough area to facilitate the traffic flow
- 3. Dimensions with mark* should be extended 500mm in case VVVV or double drive
- 4. All dimension refer to finished dimension is in mm

Project Highlight

